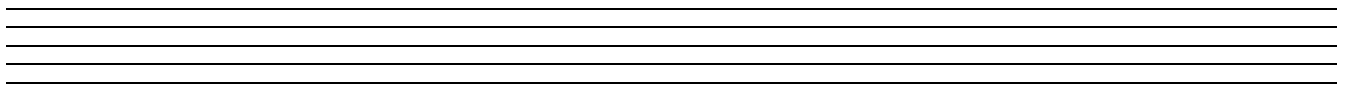


Surface Tension

open score for chamber ensemble

Jordan Nobles



Surface Tension

open score for chamber ensemble

Jordan Nobles

About the Piece

Surface Tension was premiered by the Aventa Ensemble, directed by Bill Linwood, on December 4, 2012.

The original Performance included *Quickening*, *Surface Tension* and *Rogue Waves* all played attacca.

Performance Notes

Surface Tension involves a suspended harmony of long tones and slow glissandi

- play any long tone, or glissando, in any order
- all cells can be played in any octave as long as the dynamics are observed
- what cells to play, and when to play them, should be decided by each musician independently as long as they are responsive to the other players. A good rule is to stop after completing a cell and listen for a moment before joining in again. Musicians in smaller ensembles can play more often but in larger ensembles should play less often to give space throughout the performance.
- there is no pulse or synchronization required or desired

Instrument Specific Notes

Winds & Brass: only play glisses that work well on your instrument, if none work then just play the long tones

Strings: use sul ponticello throughout

Percussion: do not worry about the glisses, just bow long tones on vibraphone, crotales and various cymbals

Guitar: use a volume pedal and an ebow for the swells, and bend strings or use a slide for the glisses

Surface Tension

Play any cells, in any order, in any octave

Long Tones - hold for 5-15 seconds or for the duration of a single breath or bow, no tremolo
- (Percussion: bow vibes, crotales or cymbals; Strings: sul ponticello)

pp mp

pp mp

pp mp

pp mp

pp mp

pp mp

Glissandi - mostly play glisses slowly but vary the speed occasionally, only play glisses that work well on your instrument
- minor seconds

pp mp pp

pp mp pp

pp mp pp

pp mp pp

pp mp pp

pp mp pp

- minor thirds

pp mp pp

pp mp pp

pp mp pp

pp mp pp

pp mp pp

pp mp pp

Surface Tension

Score in C - bass clef

Jordan Nobles

Play any cells, in any order, in any octave

Long Tones - hold for 5-15 seconds or for the duration of a single breath or bow, no tremolo
- (Percussion: bow vibes, crotales or cymbals; Strings: sul ponticello)

Musical staff with bass clef, two notes (C2 and C3) with a slur and dynamic markings *pp* and *mp*.

Musical staff with bass clef, two notes (C2 and C3) with a slur and dynamic markings *pp* and *mp*.

Musical staff with bass clef, two notes (C2 and C3) with a slur and dynamic markings *pp* and *mp*.

Musical staff with bass clef, two notes (C#2 and C3) with a slur and dynamic markings *pp* and *mp*.

Musical staff with bass clef, two notes (B2 and C3) with a slur and dynamic markings *pp* and *mp*.

Musical staff with bass clef, two notes (C2 and C3) with a slur and dynamic markings *pp* and *mp*.

Glissandi - mostly play glisses slowly but vary the speed, only play glisses that work well on your instrument
- minor seconds

Musical staff with bass clef, glissando between C2 and C3, dynamic markings *pp*, *mp*, and *pp*.

Musical staff with bass clef, glissando between C2 and C#3, dynamic markings *pp*, *mp*, and *pp*.

Musical staff with bass clef, glissando between B2 and C3, dynamic markings *pp*, *mp*, and *pp*.

Musical staff with bass clef, glissando between C2 and C#3, dynamic markings *pp*, *mp*, and *pp*.

Musical staff with bass clef, glissando between C2 and C3, dynamic markings *pp*, *mp*, and *pp*.

Musical staff with bass clef, glissando between C2 and C#3, dynamic markings *pp*, *mp*, and *pp*.

- minor thirds

Musical staff with bass clef, glissando between C2 and E3, dynamic markings *pp*, *mp*, and *pp*.

Musical staff with bass clef, glissando between C2 and D3, dynamic markings *pp*, *mp*, and *pp*.

Musical staff with bass clef, glissando between C2 and E3, dynamic markings *pp*, *mp*, and *pp*.

Musical staff with bass clef, glissando between B2 and D3, dynamic markings *pp*, *mp*, and *pp*.

Musical staff with bass clef, glissando between C2 and D3, dynamic markings *pp*, *mp*, and *pp*.

Musical staff with bass clef, glissando between C2 and E3, dynamic markings *pp*, *mp*, and *pp*.

Surface Tension

Play any cells, in any order, in any octave

Long Tones - hold for 5-15 seconds or for the duration of a single breath or bow, no tremolo
- (Percussion: bow vibes, crotales or cymbals; Strings: sul ponticello)

pp mp

pp mp

pp mp

pp mp

pp mp

pp mp

Glissandi - mostly play glisses slowly but vary the speed, only play glisses that work well on your instrument
- minor seconds

pp mp pp

pp mp pp

pp mp pp

pp mp pp

pp mp pp

pp mp pp

- minor thirds

pp mp pp

pp mp pp

pp mp pp

pp mp pp

pp mp pp

pp mp pp

Surface Tension

Play any cells, in any order, in any octave

Long Tones - hold for 5-15 seconds or for the duration of a single breath or bow, no tremolo
- (Percussion: bow vibes, crotales or cymbals; Strings: sul ponticello)

Musical staff with a long tone glissando from G4 to A4. Dynamics: *pp* to *mp*.

Musical staff with a long tone glissando from G#4 to A4. Dynamics: *pp* to *mp*.

Musical staff with a long tone glissando from F#4 to G4. Dynamics: *pp* to *mp*.

Musical staff with a long tone glissando from A4 to B4. Dynamics: *pp* to *mp*.

Musical staff with a long tone glissando from A4 to B \flat 4. Dynamics: *pp* to *mp*.

Musical staff with a long tone glissando from B4 to C5. Dynamics: *pp* to *mp*.

Glissandi - mostly play glisses slowly but vary the speed, only play glisses that work well on your instrument
- minor seconds

Musical staff with a glissando from G4 to G#4. Dynamics: *pp* to *mp* to *pp*.

Musical staff with a glissando from F#4 to G4. Dynamics: *pp* to *mp* to *pp*.

Musical staff with a glissando from F4 to F#4. Dynamics: *pp* to *mp* to *pp*.

Musical staff with a glissando from G#4 to A4. Dynamics: *pp* to *mp* to *pp*.

Musical staff with a glissando from A4 to A \flat 4. Dynamics: *pp* to *mp* to *pp*.

Musical staff with a glissando from B4 to B \flat 4. Dynamics: *pp* to *mp* to *pp*.

- minor thirds

Musical staff with a glissando from G4 to B \flat 4. Dynamics: *pp* to *mp* to *pp*.

Musical staff with a glissando from G#4 to B4. Dynamics: *pp* to *mp* to *pp*.

Musical staff with a glissando from F4 to A \flat 4. Dynamics: *pp* to *mp* to *pp*.

Musical staff with a glissando from F#4 to A \flat 4. Dynamics: *pp* to *mp* to *pp*.

Musical staff with a glissando from F4 to B \flat 4. Dynamics: *pp* to *mp* to *pp*.

Musical staff with a glissando from E4 to G4. Dynamics: *pp* to *mp* to *pp*.

Surface Tension

Play any cells, in any order, in any octave

Long Tones - hold for 5-15 seconds or for the duration of a single breath or bow, no tremolo
- (Percussion: bow vibes, crotales or cymbals; Strings: sul ponticello)

Musical staff with a long tone glissando from G4 to A4. Dynamics: *pp* to *mp*.

Musical staff with a long tone glissando from A4 to B4. Dynamics: *pp* to *mp*.

Musical staff with a long tone glissando from Bb4 to B4. Dynamics: *pp* to *mp*.

Musical staff with a long tone glissando from A4 to Bb4. Dynamics: *pp* to *mp*.

Musical staff with a long tone glissando from B4 to Bb4. Dynamics: *pp* to *mp*.

Musical staff with a long tone glissando from Bb4 to Bb4. Dynamics: *pp* to *mp*.

Glissandi - mostly play glisses slowly but vary the speed, only play glisses that work well on your instrument
- minor seconds

Musical staff with a glissando from G4 to Ab4. Dynamics: *pp* < *mp* > *pp*.

Musical staff with a glissando from Ab4 to A4. Dynamics: *pp* < *mp* > *pp*.

Musical staff with a glissando from A4 to Ab4. Dynamics: *pp* < *mp* > *pp*.

Musical staff with a glissando from Ab4 to Bb4. Dynamics: *pp* < *mp* > *pp*.

Musical staff with a glissando from Bb4 to B4. Dynamics: *pp* < *mp* > *pp*.

Musical staff with a glissando from B4 to Bb4. Dynamics: *pp* < *mp* > *pp*.

- minor thirds

Musical staff with a glissando from G4 to Bb4. Dynamics: *pp* < *mp* > *pp*.

Musical staff with a glissando from Ab4 to B4. Dynamics: *pp* < *mp* > *pp*.

Musical staff with a glissando from Bb4 to D4. Dynamics: *pp* < *mp* > *pp*.

Musical staff with a glissando from Ab4 to Bb4. Dynamics: *pp* < *mp* > *pp*.

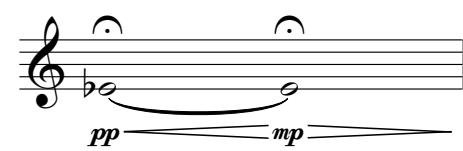
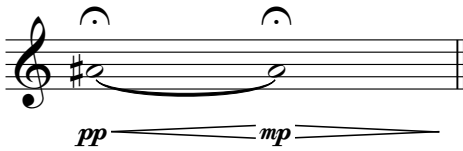
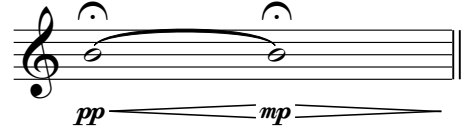
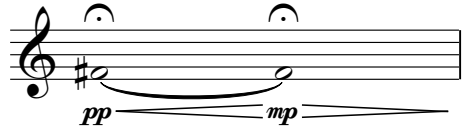
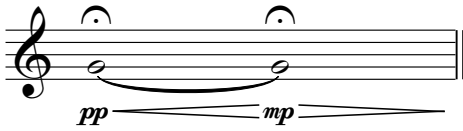
Musical staff with a glissando from Bb4 to B4. Dynamics: *pp* < *mp* > *pp*.

Musical staff with a glissando from B4 to Bb4. Dynamics: *pp* < *mp* > *pp*.

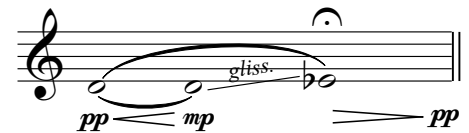
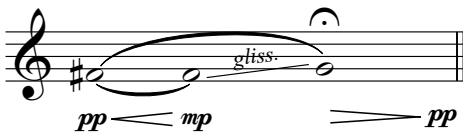
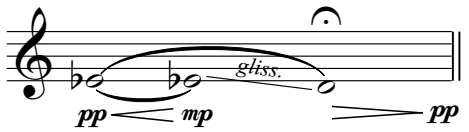
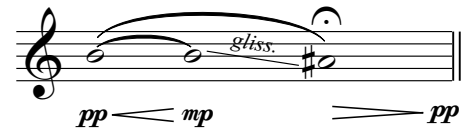
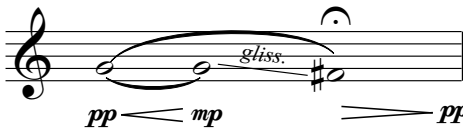
Surface Tension

Play any cells, in any order, in any octave

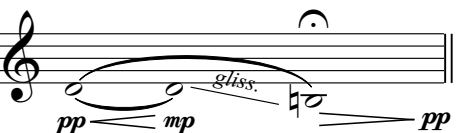
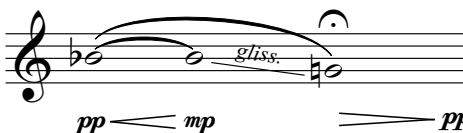
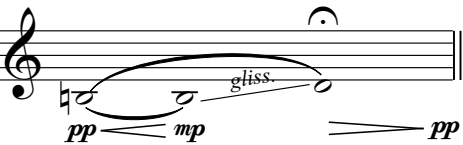
Long Tones - hold for 5-15 seconds or for the duration of a single breath or bow, no tremolo
- (Percussion: bow vibes, crotales or cymbals; Strings: sul ponticello)



Glissandi - mostly play glisses slowly but vary the speed, only play glisses that work well on your instrument
- minor seconds



- minor thirds



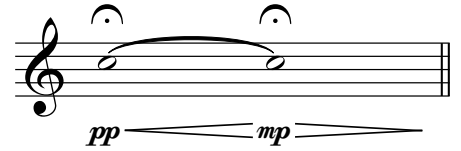
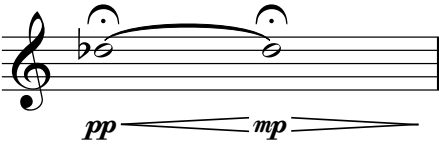
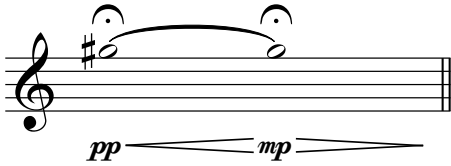
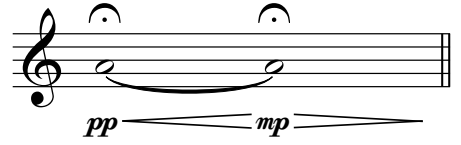
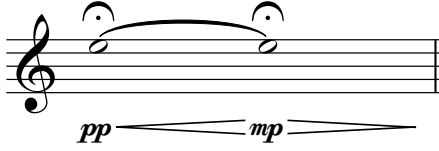
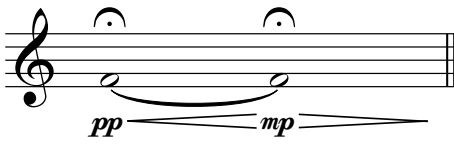
Surface Tension

Score in G

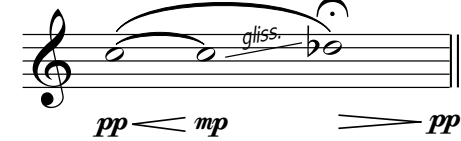
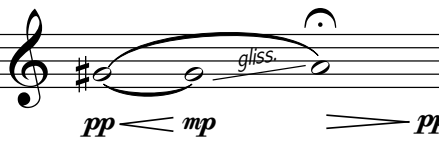
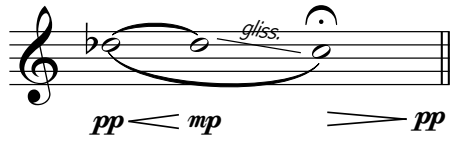
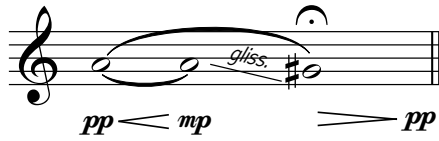
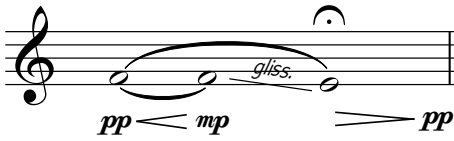
Jordan Nobles

Play any cells, in any order, in any octave

Long Tones - hold for 5-15 seconds or for the duration of a single breath or bow, no tremolo
- (Percussion: bow vibes, crotales or cymbals; Strings: sul ponticello)



Glissandi - mostly play glisses slowly but vary the speed occasionally, only play glisses that work well on your instrument
- minor seconds



- minor thirds

